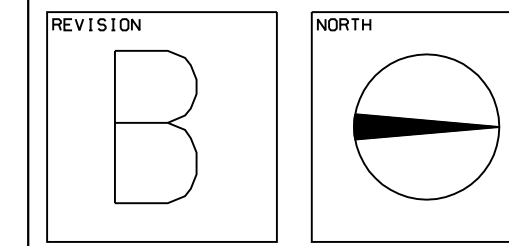
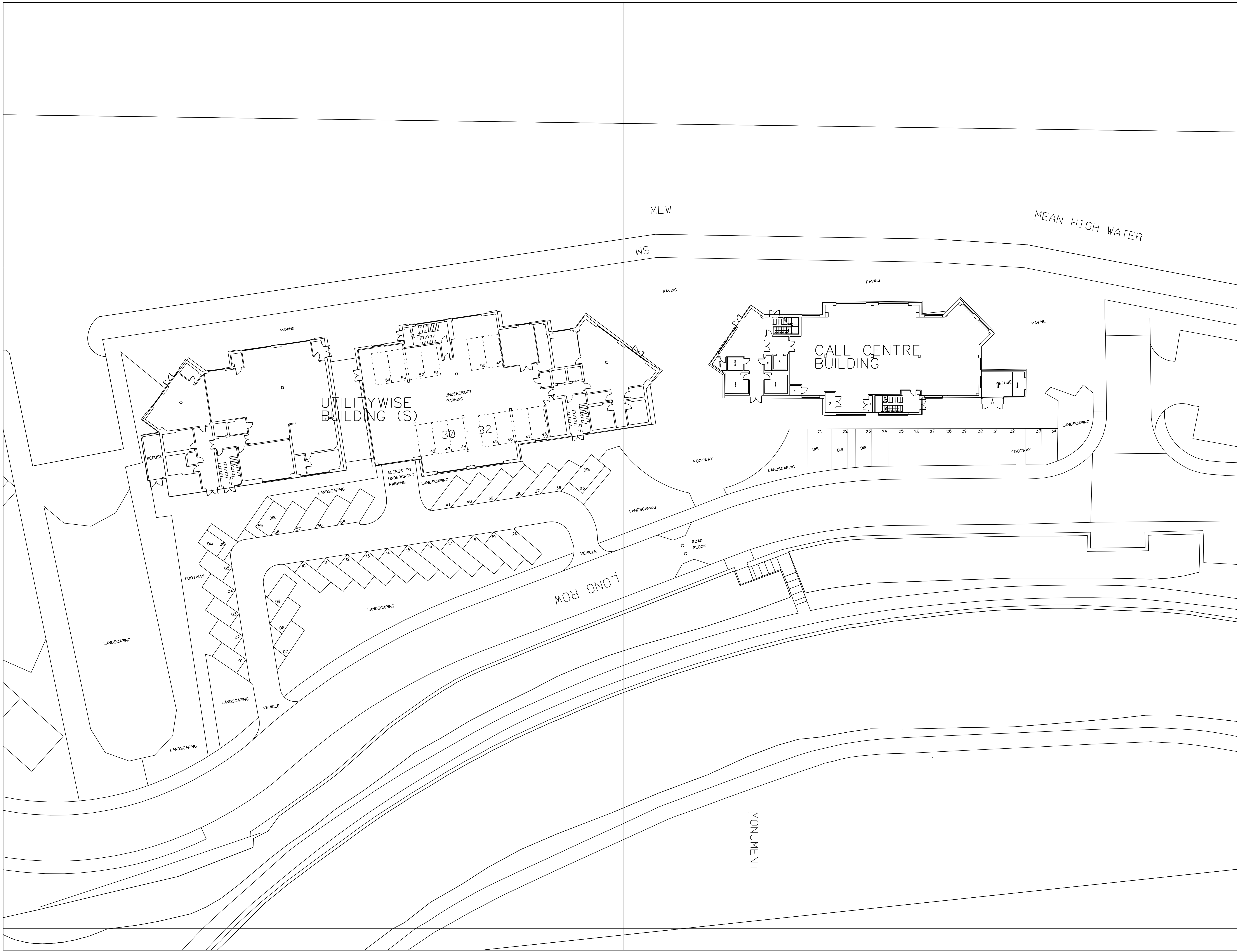


REVISION DATE / DESCRIPTION
 REVISION 'A' - 09.05.17
 - EXISTING PARKING SHOWN
 REVISION 'B' - 12.05.17
 - PARKING BAYS DETAILED



STAGE PLANNING

PROJECT
 PROPOSED EXTERNAL MODIFICATIONS
 FOR RESIDENTIAL PRIOR APPROVAL
 AT MARKET DOCK, LONG ROW,
 SOUTH SHIELDS, NE33 1JA

DRAWING
 EXISTING SITE PLAN

PROJECT NO. 2924	DRAWING NO. C-13	REVISION B
---------------------	---------------------	---------------

DATE JAN '17	SCALE 1:2500A1 1:5000A3	DRAWN BY MM
-----------------	-------------------------------	----------------

MARIO MINICHELLA ARCHITECTS

UNIT 4, WITNEY WAY,
 HI-TECH VILLAGES,
 GOLDON BUSINESS PARK
 TYNE AND WEAR
 NE25 9PE
 T: 0191 3002227
 W: WWW.M-M-A.NET
 E: INFO@M-M-A.NET

THIS DRAWING IS
 COPYRIGHT OF
 MMJM LIMITED

NOT TO BE SCALED
 ALL DIMENSIONS TO
 BE CHECKED ON SITE